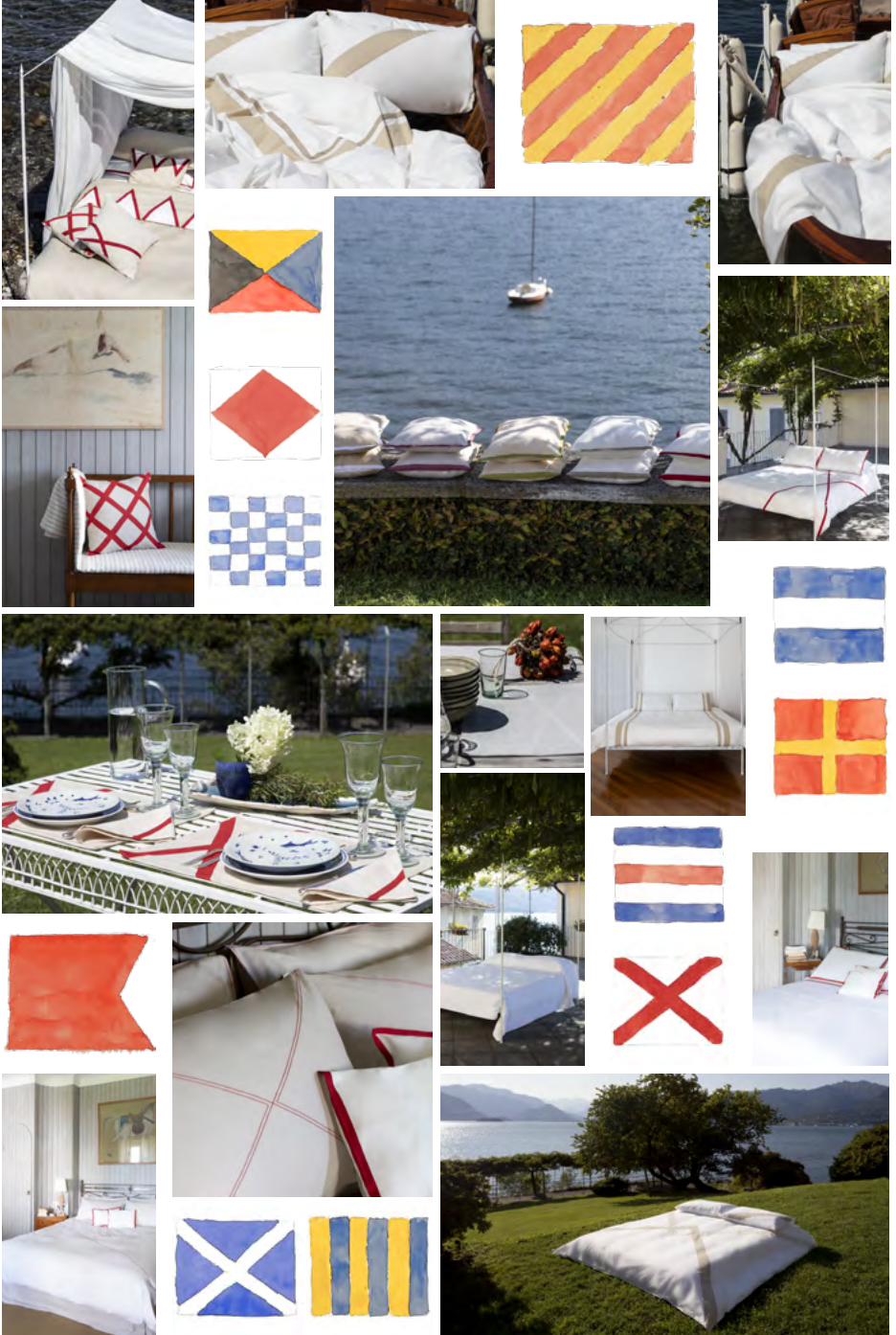


D & C

MILANO

ANDATURA





Con la collezione Andatura C&C Milano codifica un nuovo alfabeto per la decorazione: l'eleganza sportiva dei vessilli di navigazione internazionale richiamano la classicità della biancheria secondo la Maison Milanese. Per carattere, la collezione Andatura informa spazi ibridi, in cui il rigore delle linee geometriche è ammorbidito da brillanti accenti di colore. Una nuova classicità veste la camera da letto, il bagno e la tavola con motivi universali e senza tempo. I disegni della collezione Andatura sono declinati in puro percale di cotone egiziano nei set letto, in morbido matelassé di cotone per i copriletti, in materica tela di lino per la tavola e soffice spugna di cotone per il bagno; le tonalità classiche dei bianchi, dei beige e crema e una punta di grigio perla sono protagonisti insieme al rosso carminio dei nastri in taffetà di lino, delle impunture e delle applicazioni per interpretare uno stile raffinato ed easy chic. Bravo, Victor, Mike, November, Romeo, Juliet, Yankee, Zulu, Golf, Foxtrot e Charlie sono i modelli che tracciano lo stile deciso ed essenziale della collezione Andatura.

ANDATUR A

***T**he Andatura collection, codifies an alphabet of decoration. Inspired by the sporty elegance of international navigation flags, the designs seamlessly complement the classicism of C&C Milano's home linen. The character of the Andatura collection is of hybrid spaces, the rigor of geometric lines softened by brilliant colour accents. A new classicism dresses the bedroom, the bathroom and the table with universal and timeless motifs. The designs of the Andatura collection are applied onto pure cotton percale for bedding, soft matelassé for bedspreads, textured linen canvas for tableware and smooth cotton terry for the bathroom. Classic shades of white, beige and cream and a hint of pearl grey are accented with carmine taffeta ribbons; embroidery details highlight the Maison's chic style. Bravo, Victor, Mike, November, Romeo, Juliet, Yankee, Zulu, Golf, Foxtrot and Charlie are the models that represent the decisive and essential style of Andatura collection.*

 BRAVO



There are many ways to finish bed linens, a geometric pattern in bold colours is one of those and Bravo bedding set is the most elegant expression. An elegant line of chevrons in white and red on a sand cotton percale background, frames Bravo bed set which is super classical and contemporary at the same time. Chevrons are details that can seem formal and coming directly from old times instead they can be cheeky and give movement to a simple and neat bed in cotton. **Bravo duvet cover** 240x220 cm in cotton percale Maranello sand with red linen taffetà ribbon application. **Bravo pillowcases** 50x40 cm in cotton percale Maranello sand with red linen taffetà ribbon application.



NOVEMBER



A sophisticated trellis pattern outlines November style. **November decorative cushion** 50x50 cm in linen Volterra sand with with red linen taffetà ribbon application.





JULIET



Juliet and Romeo are beautiful bed covers made from our popular cotton matelassè, Giglio Cannettato. Bedcovers are simple ways to add texture and colour to a room without committing to a permanent fixture. The fabric is almost three-dimensional with a small ribbon pattern, a texture easy to integrate in any design scheme. Juliet has a diagonal fabric application on the right hand corner, simple hem and mitered corners; refined and elegant, it is the perfect canvas for a contemporary design.

Juliet bedcover 270x270 cm in cotton matelassè Giglio Cannettato optical white, back in cotton percale Maranello optical white.



ROMEO



Romeo style is dictated by a game of stripes and squares in pure white. **Romeo bedcover** 270x270 cm in cotton matelassè Giglio Cannettato optical white, back in cotton percale Maranello optical white.



GALAPAGOS



Galapagos is a fine bed cover made from our new cotton matelassè Delta in white and red. Bedcovers and bed runners are simple ways to add texture and colour to a room without committing to a permanent fixture. The fabric is almost three-dimensional with a stripy pattern, a texture easy to integrate in any design scheme. Galapagos has mitered corners, simple and elegant, the perfect canvas for a contemporary design. **Galapagos bedcover** 270x270 cm in cotton matelassè Delta white/red, back in cotton percale Maranello optical white.







VICTOR X

A statement contrast ribbon characterizes the definite style of the Victor bedsheet set. The simplicity of applying a contrast band of colour, transforming the bedroom in a minimal but decisive way. The Victor model is available in a wide range of colours; from delicate and neutral tones in whites and ivory, to the boldest shades. **Victor duvet cover** 240x220 cm in cotton percale Maranello milky white with red linen taffetà ribbon application. **Charlie pillow cases** 80x50 cm in cotton percale Maranello milky white with red linen taffetà ribbon application on four sides. *(from top this page)* **Victor table mats** 53x38 cm in linen Volterra sand with red linen taffetà ribbon application and **napkins** 45x45 cm in linen Cerro white beige with red linen taffetà ribbon application. **Victor** and **Charlie bathing set** (hand and guest towel) in cotton Terry towel optical white with red linen taffetà ribbon application.





FOXTROT

Foxtrot bed set, with its neat coloured lines in different tints, is a timeless style made in cotton percale Maranello. Play with sophisticated colours on a brilliant white background and paint your own Foxtrot set as on a blank canvas. Make of Foxtrot linens the signature piece of your bedroom decoration pairing the colours of the application to the ones of your interior, creating a stylish game of vibrant references. **Foxtrot duvet cover 240x220 cm** in cotton percale Maranello milky white with cotton percale application in cream and sand.









GOLF

Golf bed linen in luxurious cotton percale Maranello is lightly coloured in white and sand and remind us of old times precious bedding décor. Soft and rich in texture, cotton percale gives Golf style an effortless elegant allure. The combination between the white background and the coloured application creates a classy bed suitable for every occasion. Luminous and glam, Golf colour palette brings to life your bedroom with a soothing discretion. **Golf duvet cover** 240x220 cm in cotton percale Maranello milky white with cotton percale Maranello sand applications. **Golf pillow cases** 80x50 cm in cotton percale Maranello milky white with cotton percale Maranello sand applications. **Diana Barrè** white/dove grey (stripe 10 cm) canopy curtains in linen.





An elegant sequence of tiny running stitches make the clean and simple look of Mike style. Big in scale, Mike little coloured cross pattern on the pearl grey cotton percale background is the perfect choice for who appreciate a discreet luxury. Even the smallest detail can convey a great sense of refinement. The endless fine line of Mike embroidery will always be the distinguishing feature of your style. **Mike duvet cover** 240x220 cm in cotton percale Maranello pearl grey with red embroidery, **Mike pillow cases** 80x50 cm in cotton percale Maranello pearl grey with red embroidery. **Charlie pillow case** 40x30 cm.



Mike table mat 53x38 cm in linen Volterra sand with white embroidery, **Magnolia napkins** 45x45 cm in linen Cerro red/white with simple hem.



YANKET



Yankee and Zulu styles, with a neat diagonal coloured line in beige, are timeless style made in cotton percale Maranello. Great taste can be expressed in many ways, it does not have to be loud or understood by everybody. We know what true luxury is and we want you to let us showcase it with this incredible beddings. The subtle tones of ecru and milky white are a feast to the eyes. **Yankee duvet cover** 240x220 cm in cotton percale Maranello milky white with cotton percale application in sand. **Yankee pillow cases** 80x50 cm in cotton percale Maranello milky white with cotton percale application in sand.




ZULU



Zulu duvet cover 240x220 cm in cotton percale Maranello milky white with cotton percale application in sand and linen taffetà ribbon in natural. **November decorative cushion** 50x50 cm in cotton percale.



CHARLIE



This minimal and modern set in cotton will add a graphic touch to every bedroom interior. The movement between the plain background and the contrasting applied ribbon makes of Charlie a piece suitable for every style. The knife edge along the seams creates a clean and tailored silhouette, an iconic piece very distinctive of C&C Milano artisanal contemporary approach to home décor. **Charlie pillow cases and pillow shams** 40x30 cm in cotton percale Maranello with linen taffetà ribbon application. *(from left)* Andatura collection colour combinations: sand/white, cream/antique rose, cream/green, milky white/natural, milky white/red, sand/red.



Photography by Laila Pozzo
Styling by C&C Milano
Lago Maggiore, Italia



www.ccc-milano.com