

C & C
MILANO

TERRA



from nature to nature

Imperfetta, permanente, viva.

Un'antologia tessile che evoca ricordi di tempi passati, gesti e antichi rituali nei toni della terra, con materiali naturali e un senso di calma eleganza. Marroni e cioccolato, beige, caffè latte e bianchi caldi si stratificano per creare atmosfere sospese nel tempo in profonda connessione con la natura. Superfici opache, texture decise e un inconfondibile senso del colore definiscono un ritorno alla forza innata del design semplice e armonioso. La necessità di reimpostare i nostri valori in linea con le cose semplici e familiari; il piacere di disconnettersi dalla frenetica vita moderna: queste, sono le idee che ispirano la nuova collezione di tessuti C&C Milano. Il ritorno a fibre antiche e dimenticate come la canapa e la iuta consente a C&C Milano di sviluppare prodotti dalle naturali proprietà isolanti e traspiranti. *Crispiano*, *Maruggio* e *Taranto*, tre diverse grammature in grande altezza, sono perfette per biancheria da letto e tendaggi eterei. Il puro lino è declinato in tessuti sartoriali in cui texture e colore mettono in primo piano la bellezza della fibra: *Salina*, *Lipari* e *Ranieri Barrè* con le loro grandi altezze in diversi gradi di trasparenza, evocano i colori più tenui dei paesaggi naturali; *Gea*, robusto velluto a coste, ed *Ernestino* sono sofisticati tessuti per decorazione e rivestimento che fanno della resistenza il loro punto di forza. Filati di lana si incontrano con fibre di lino per dare forma a due resistenti tessuti da rivestimento, *Garcia* e *Diego*, in cui le irregolarità della superficie rendono questi manufatti autentici e unici. Il nostro bestseller in misto lino e cotone *Palea Rigato* si veste di una nuova tonalità di bianco, per inaspettati effetti tono su tono. La serie di plaid tessuti a mano di C&C Milano accoglie un nuovo modello, *Charlotte*, in avvolgente e morbido bouclé di cammello misto seta: ogni pezzo è realizzato a mano, lentamente e con cura, da San Patrignano Design Lab. La collezione di tessuti tecnici si arricchisce infine di due nuovi prodotti indoor/outdoor in 100% solution dyed acrylic, *Baia* e *Ruga*, resistenti all'abrasione, alla luce e agli agenti atmosferici, e facilmente lavabili; e *Rua Prince of Wales*, jacquard pezzo forte della collezione performance C&C Milano, in 100% polipropilene ignifugo e outdoor.

**Semplici nell'estetica,
ma ricchi di tattilità
e realizzati con un
sofisticato metodo di
lavorazione, i nuovi
tessuti di C&C Milano
per rivestimenti,
decorazione e
biancheria da letto ci
ricordano di entrare
di nuovo in contatto
con la materia e il
saper fare artigiano.**

Imperfect, permanent, alive.

The new fabrics collection by C&C Milano explores the very essence of the brand. A textile anthology that evokes memories of quiet times, gestures and old rituals. Earthly tones, natural materials, and a sense of calm elegance. Browns and chocolates, beige, cafe latte and warm whites layer to create atmospheres suspended in time in deep connection with nature. Opaque surfaces, strong textures and an unmistakable sense of colour define a return to the innate power of simple and harmonious design. The need for re-setting our values with something simple and familiar; the pleasure of disconnecting from a hectic modern life: these ideas inspire the whole series of fabrics. A return to ancient and forgotten fibres like hemp and jute enables C&C Milano to develop products that are naturally great insulators with the benefit of breathability. *Crispiano*, *Maruggio* and *Taranto*, three different weights in wide width, perfect for creating layered bed linens and draperies. Pure linen is declined in sartorial fabrics in which texture and colour bring the beauty of the fibre to the foreground: *Salina*, *Lipari* and *Ranieri Barrè* wide width options in gradients of transparency, evoking the softest colours of natural landscapes; *Gea*, a sturdy classic corduroy, and *Ernestino* are upholstery options that make high durability their strong point. Wool yarns meet with flax fibres to shape two hardy upholstery fabrics, *Garcia* and *Diego*, irregularities on the surface make these qualities uniquely artisanal. Our bestselling linen and cotton blend *Palea Rigato* will be available in a new tone of white for unexpected tone on tone effects. C&C Milano series of handwoven throws welcome a new style, *Charlotte*, in soft camelhair and silk bouclé: every piece is handmade, slowly with care by San Patrignano Design Lab. The performance collection is expanded with two new indoor/outdoor qualities. 100% solution dyed acrylic, *Baia* and *Ruga*, are resistant to abrasion, colour fast and easy care. *Rua Prince of Wales*, C&C Milano's signature performance jacquard brings a timeless pattern into the performance market, 100% fireproof and outdoor polypropylene.

Simple in aesthetic,
but rich in tactility
and made with a
sophisticated method
of manufacture the
new fabrics by C&C
Milano for upholstery,
decoration and bed
linens remind us to
get in touch again
with matter and craft.





1

(left page) Curtain in Maruggio sand 229260, jacquard 100% hemp, width 320 cm. On the stool: Garcia white/natural 229491, linen and wool blend, width 140 cm. On the floor: Ernestino officinalis 229493 and cord 229494, 100% linen, width 140 cm.

1. Ernestino officinalis 229493 and cord 229494, 100% linen, width 140cm.

2. Ernestino officinalis 229493, 100% linen, width 140cm.

3. Ernestino 100% linen, width 140cm.

4. Maruggio sand 229260, jacquard 100% hemp, width 320 cm.



2



3



4



1. Crispiano natural white 229259, 100% hemp, width 325 cm.

2. Ranieri Barrè pearl grey/white 229633, 100% linen, width 300 cm.

3. (from top) Palea Rigato ivory 222274, linen and cotton blend, width 140 cm. Gea white 228888, linen corduroy, width 135 cm. Ernestino white 229492, 100% linen, width 140 cm. Diego white 229497, linen and wool blend, width 135 cm.

(right page) On the armchair Garcia white 229490, linen and wool blend, width 140 cm. Curtain in Crispiano natural white 229259, 100% hemp, width 325 cm.



1

2

3







(left page) Curtains in Lipari natural 228891 and natural white 228893, 100% linen, width 300 cm. Throw Charlotte beige 230201, camel and silk blend, 140x180 cm with small fringes. This page from top: Diego rust 229503, straw 229506, tobacco 229501, linen and wool blend, width 135 cm. Gea bark 228890, linen corduroy, width 135 cm. Taranto sand 229261, linen and hemp blend, width 335 cm.



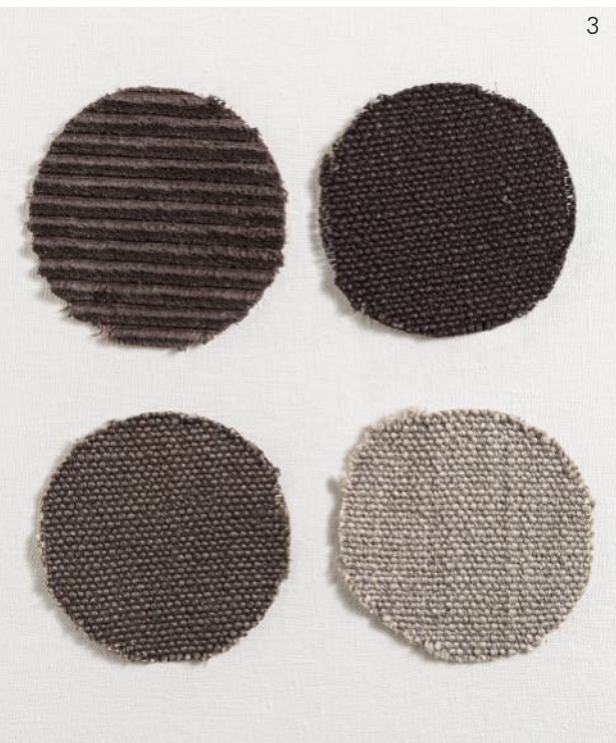


1

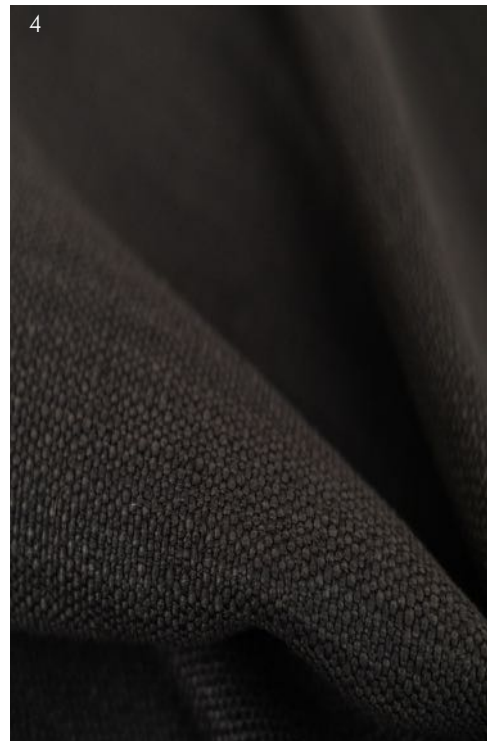
1. Diego elephant 229500 and gravel 229499, linen and wool blend, width 135 cm. Siena brown 127188, 100% linen, width 135 cm.
2. Ranieri Barrè natural/coffee 229638, 100% linen, width 300 cm.
3. (from top left) Gea chocolate 228884, linen corduroy, width 135 cm. Diego coffee 229502, elephant 229500 and gravel 229499, linen and wool blend, width 135 cm.
4. Diego coffee 229502, linen and wool blend, width 135 cm.



2



3



4





1. (from top) Cushion Karkadè in linen Volterra mauve with piping in Murano artichoke green, 50x50 cm. Ernestino thyme 229496, 100% linen, width 140 cm. Diego artichoke green 229507, linen and wool blend, width 135 cm.

2. Gea thyme 229262, linen corduroy, width 135 cm.

3. Gea linen corduroy available in chocolate, aquamarine, bark, antique rose, white and thyme, width 135 cm.

4. Throw Charlotte camel 229252, camel and silk blend, 140x180 cm.



2



3



4








1. (from top) Ernestino celadon 229495, 100% linen, width 140 cm. Diego peacock 229508, linen and wool blend, width 135 cm. Gea aquamarine 228889, linen corduroy, width 135 cm.
2. Ranieri Barrè natural/dust 229636, 100% linen, width 300 cm.
3. Baia outdoor velvet in solution dyed acrylic, available in navy blue, mud, beige, metal and white, width 145 cm.
4. Bolgheri dust 165510, 100% linen, width 140 cm. In the background, wallpaper Margot anthracite 223135, 100% raffia, width 85 cm.







(left page) Curtain in Ranieri Barrè natural/antique rose 229635, 100% linen, width 300 cm. On the armchair: cushion Orchidea in linen Volterra sand with fringe in linen Volterra mauve, 50x50 cm. This page from top: Diego wine 229504 and mauve 229505, linen and wool blend, width 135 cm. Cushion Orchidea in linen Volterra mauve with fringe in linen Volterra sand, 50x50 cm.

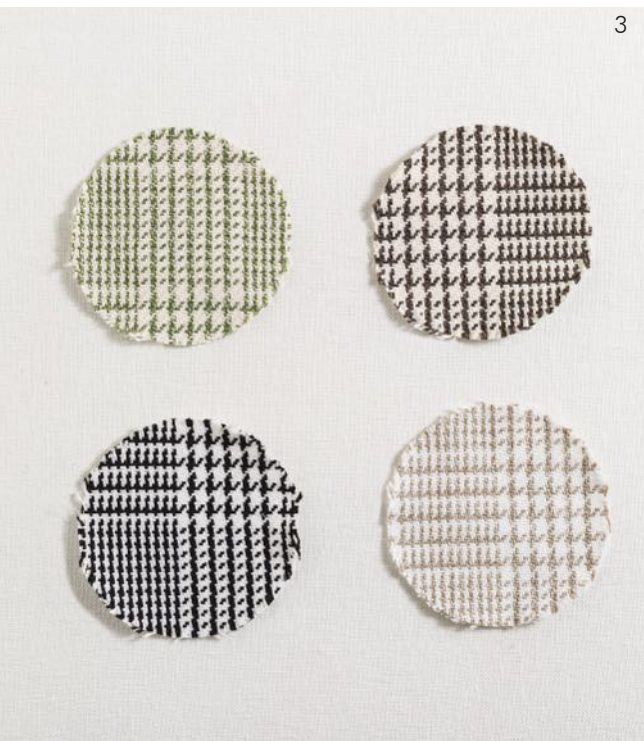
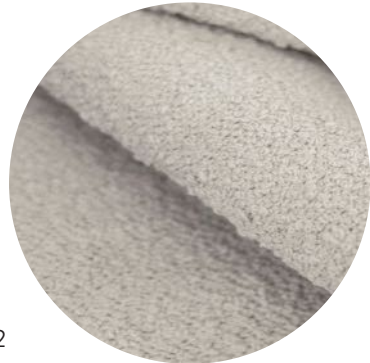




1. (from top) Baia outdoor velvet mud 228612, solution dyed acrylic, width 145 cm. Ruga white 228607, 100% solution dyed acrylic, width 140 cm. Baia outdoor velvet beige 228606 and white 228608, solution dyed acrylic, width 145 cm. Rua Prince of Wales white/natural 228615, 100% polypropylene, width 140 cm. Knitted throw Eolo white, 100% cashmere, 140x180 cm.

2. Ruga beige 228610, 100% solution dyed acrylic, width 140 cm.

3. Rua Prince of Wales, 100% polypropylene, available in ivory/green, ivory/brown, white/black and white/natural.

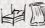


1

2


3

BEDLINENS AND SHEERS

CRISPIANO 
100% ca, width 325 cm



natural white 229259

TARANTO 
50% ca 50% ju, width 335 cm




sand 229261

MARUGGIO 
100% ca, width 320 cm



sand 229260

SALINA 
81% li, 13% pc, width 285 cm



sand 228894

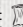
LIPARI 
100% li, width 300 cm



natural white 228893



natural 228891

RANIERI BARRÉ 
100% li, width 300 cm



pearl grey/white 229633



natural/white 229634



natural/dust 229636



natural/ antique rose
229635

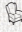


natural/mustard 229637



natural/coffee 229638

UPHOLSTERY AND DECORATION

GEA rubs 30000 
linen corduroy, width 135 cm



white 228888



bark 228890



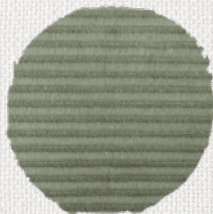
chocolate 228884




antique rose 228883

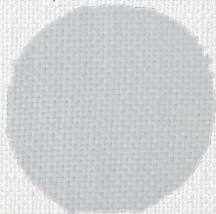


aquamarine 228889

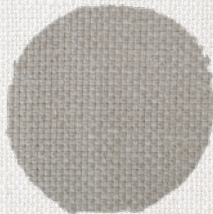


thyme 229262

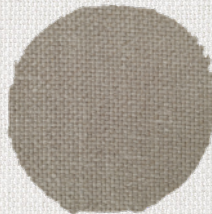
ERNESTINO rubs 30000 
100% li, width 140 cm



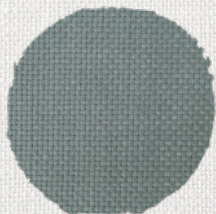
white 229492



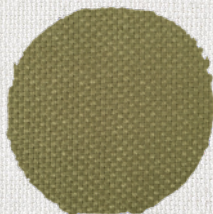
officinalis 229493



cord 229494




celadon 229495



thyme 229496

UPHOLSTERY AND DECORATION

DIEGO rubs 10000 
55% li, 35% wo, width 135 cm



white 229497



natural 229498



straw 229506



rust 229503



tobacco 229501



coffee 229502



elephant 229500



gravel 229499



peacock 229508




artichoke green 229507



mauve 229505

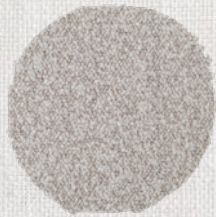


wine 229504


GARCIA rubs 30000 
45% li, 26% wo, width 140 cm



white 229490



white/natural 229491

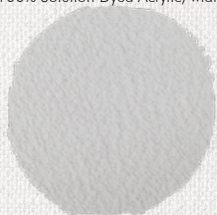
PALEA RIGATO rubs 25000 
50% li, 35% co, width 140 cm



ivory 222274

PERFORMANCE FABRICS

RUGA rubs 40000 
100% Solution Dyed Acrylic, width 140 cm

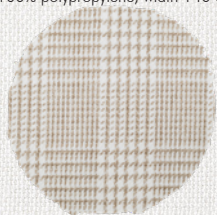


white 228607

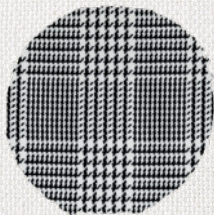


beige 228610

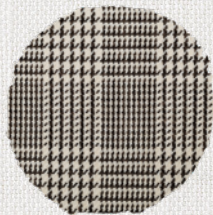
RUA PRINCE OF WALES rubs 40000  
100% polypropylene, width 140 cm



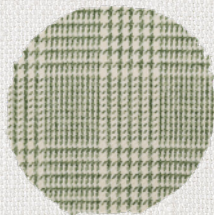
white/natural 228615



white/black 228618

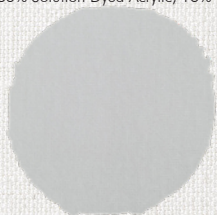


ivory/brown 228617



ivory/green 228616

BAIA rubs 120000 
85% Solution Dyed Acrylic, 15% PES width 145 cm



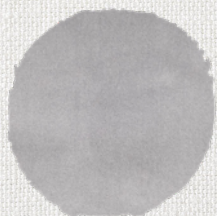
white 228608



beige 228606



mud 228612



metal 228609



navy blue 228611

Photography by Laila Pozzo
Styling by Table Top

Thanks to Ceramiche Refin, Tabu, Fornace Brioni, Ceramiche Miesi.

www.cec-milano.com