

C&C Milano, Tessuto

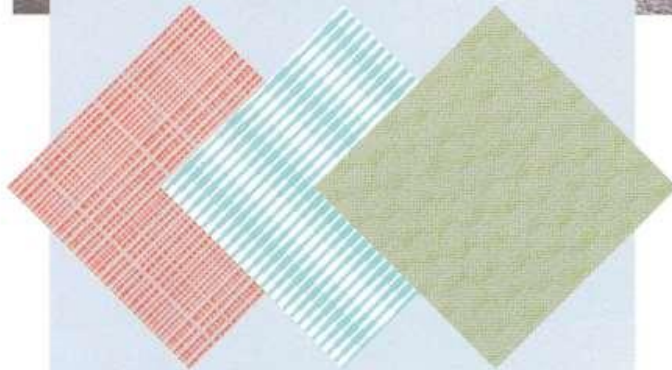


INDOOR/OUTDOOR LIVING



FRESH PASTELS

Think sugary shades of pink, peach and lavender, tempered by tranquil greens



Top 'Moorea' fabric collection, from £127.20 per metre, Pierre Frey (pierrefrey.com) **Fabrics, from left** 'London Crosshatch' by Nina Campbell in 'Coral', £210 per metre, Summit (summitfurniture.com). 'Pic Nic Grill' in 'Tiffany', £142 per metre, CeC Milano (cec-milano.com). 'Honey B' in 'Spring' by Link Outdoor, £221 per metre, Colony (colonyuk.com)

DEEP OCEAN
BLUES

Dive into this season's key hue, from indigo to cerulean



Fabrics, from top 'Go To Stripe' in 'Blue Jean', price on application, Perennials and Sutherland (perennialsandsutherland.com). 'Padua' in 'Cobalt', £41 per metre, Designers Guild (designersguild.com). 'Fresh Air' in 'Sky' by Schumacher, £292 per metre, Turnell & Gigon (turnellandgigon.com) **Below** 'White Orchid' fabric collection, from £95 per metre, Ralph Lauren Home (ralphlaurenhome.com)



VICIÒRE KEBE BICHEI/TONY PACTINE, JAKI AKI/ONU