

01/05/20

Elle Decor US

N°5

Diffusione 555.366

Pag.-1

C&C Milano, Tessuto

James Merrell, Fotografi

Bebe Howorth, Redattori/Stylist



MORE THAN EVER, THERE IS NO PLACE LIKE HOME

ELLE DECOR

MAY 2020

FOR THE LOVE OF
ITALY

**TIMELESS
INSPIRATION
FROM VENICE,
MILAN, ROME,
PUGLIA &
TUSCANY**

**HEDGED BETS:
THE RETURN OF THE
FORMAL GARDEN**



C&C Milano, Tessuto

James Merrell, Fotografi



CONTENTS

28 EDITOR'S LETTER

31 POV

Our survey of the season's most exciting new fabric and wallcovering designs

35 WHAT'S HOT

The best design discoveries

42 TRUTH IN DECORATING

Designers Brigette Romanek and Jamie Bush on the best teak furniture

46 SPOTLIGHT

We catch up with Philippe Starck at L'Avenue in New York, which he designed.
BY SHIVANI VORA

48 JEWELRY BOX

Moody amethyst and sapphire statement rings

50 TALENT

Fashion designer Joseph Altuzarra debuts a new decor collab with Etsy

54 SHORTLIST

Giulia Molteni and eight things she can't live without

56 ICONS

Giorgio Armani reflects on the 20th anniversary of his Armani/Casa brand

BUILDER

61 GREAT OUTDOORS

As stateliness returns to landscape design, urban gardens also begin to bloom.
BY TIM McKEOUGH

64 ANATOMY OF A HOUSE

Stylist Annette Joseph transforms a 12th-century Tuscan fortress into a creative retreat.
BY DOMENICA MARCHETTI

106 RESOURCES

108 NOT FOR SALE

A gilt mirror by Roberto Rida and Simone Crestani



FEATURES

68 THE LONG VIEW

An apartment overlooking the Grand Canal highlights Venice's beauty—and the historic city's resilience.
BY BEBE HOWORTH
DESIGNER JACQUES GRANGE

72 RARE GEM

Bulgari's creative director, Lucia Silvestri, restores a centuries-old house on a hilltop in Puglia.
BY JILL NEWMAN
DESIGNERS LUCIA SILVESTRI AND BEPI POVIA

80 RENAISSANCE MAN

For his cosmopolitan pad in Rome, Valentino's Carlos Souza taps into a life of travel and spirituality.
BY JESSICA IREDALE
DESIGNER CARLOS SOUZA

86 PERFECT TRANSLATION

The Milanese duo behind Studio Peregalli returns a tony London apartment to its 18th-century splendor.
BY DANA THOMAS
DESIGNERS LAURA SARTORI RIMINI AND ROBERTO PEREGALLI

94 SOUTHERN EXPOSURE

An *ED* A-Lister and his husband bring a ruined palazzo on Sicily back from the brink.
BY JULIA REED
DESIGNERS BILL BROCKSCHMIDT AND RICHARD DRAGISIC

102 HEART AND SOLE

Celebrity shoe designer Christian Louboutin invites *ED* into his Jacques Grange–designed rooftop apartment in Paris.
BY WHITNEY ROBINSON
DESIGNER JACQUES GRANGE

A corner of the family room in Lucia Silvestri's trullo in Puglia, page 72.



ON THE COVER

The living room in Nikki McCullagh's Venice pied-à-terre, designed by Jacques Grange.

PHOTOGRAPH BY JAMES MERRELL

E-mail: elledecor@hearst.com



Follow us on **Instagram** and **Twitter**: @elledecor



Like us on **Facebook**: [facebook.com/ELLEDECORmag](https://www.facebook.com/ELLEDECORmag)

Write to us: Mailbox, ELLE DECOR, 300 W. 57th St., 27th Fl., NY, NY 10019



TOP: WILLIAM ABRANOWICZ; BOTTOM LEFT: JAMES MERRELL

Visit service.elledecor.com to order a print subscription, pay your bill, renew your subscription, update your mailing and e-mail addresses, and more. Or write to: Customer Service Department, ELLE DECOR, P.O. Box 37870, Boone, IA 50037. One-year subscription rate \$15 for U.S. and possessions, \$41 for Canada, and \$60 for other international. To purchase digital back issues, please go to backissues.elledecor.com.

01/05/20

Elle Decor US

N°5

Diffusione 555.366

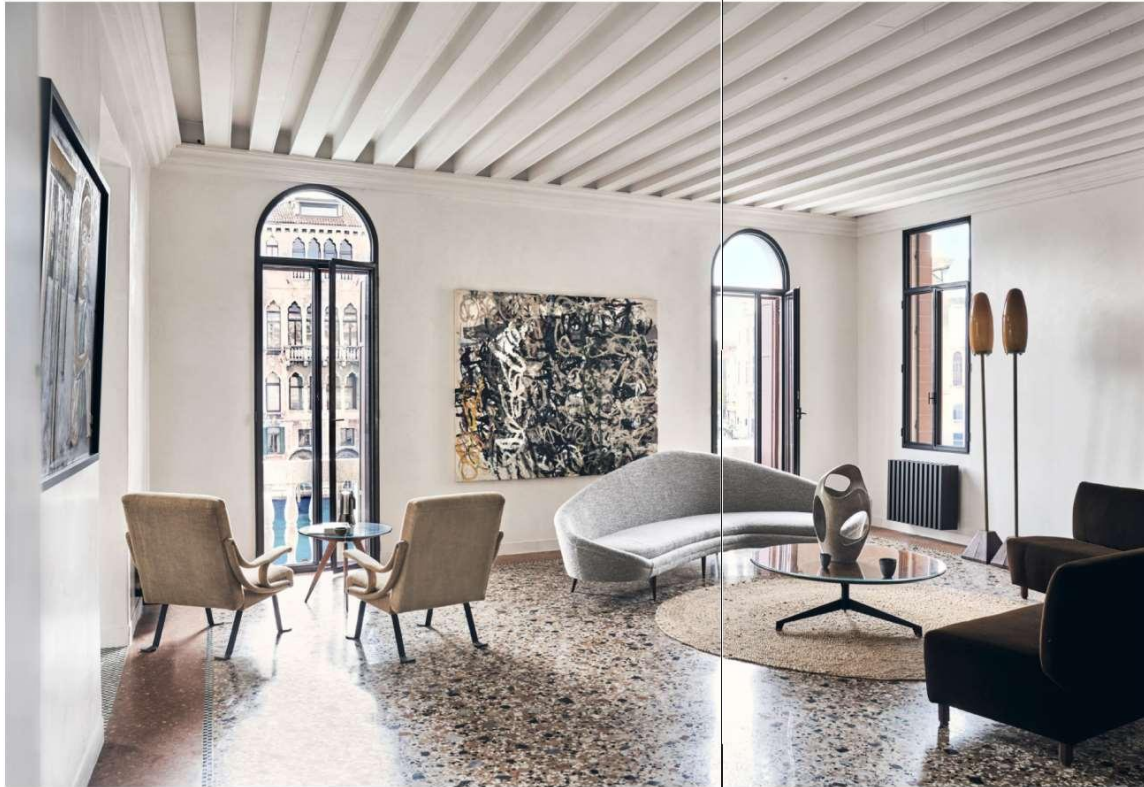
Pag.68

The long view

C&C Milano, Tessuto

James Merrell, Fotografi

Bebe Howorth, Redattori/Stylist



ABOVE: In the living room, the cocktail table is by Azucena, the Ignazio Gardella chairs for Gavina are in a C&C Milano linen, the vase is by Antonia Campi, and the artwork is by Michael Goldberg. **OPPOSITE:** A view of the Grand Canal from the apartment.



THE LONG VIEW

AN APARTMENT OVERLOOKING THE GRAND CANAL HIGHLIGHTS **VENICE'S BEAUTY**—AND THE HISTORIC ITALIAN CITY'S RESILIENCE.

BY BEBE HOWORTH
PHOTOGRAPHS BY JAMES MERRELL

LIKE CANALETTOS COME TO LIFE, THE VIEWS dazzle from this Venetian pied-à-terre. Owner Nikki McCullagh, a design enthusiast who lives between Australia and London, enlisted the French interior designer Jacques Grange to restore this piano nobile apartment in a small palazzo on the Grand Canal. He worked with Venice-based architect Barbara De Stefano to streamline the space, enhancing its postcard views in three directions. The gallerylike decor was inspired by the interiors of the Italian modernist Carlo Scarpa. "I'm passionate about art, design, and decor," says McCullagh, who rents out the apartment when she isn't using it. "And about the personal journey one is afforded in the restoration of special historical spaces." ■

C&C Milano, Tessuto

Cyrill Matter, Fotografi



RESOURCES

Items pictured but not listed are from private collections.

WHAT'S HOT

PAGE 40: Kelly Behun, kellybehun.com.

TRUTH IN DECORATING

PAGES 42-44: Jamie Bush, jamiiebush.com. Brigette Romanek, romanekdesignstudio.com. Casa Perfect, thefutureperfect.com.

ANATOMY OF A HOUSE

PAGES 64-66: Interior design: Annette Joseph, annettejosephstyleworkshops.squarespace.com.



THE LONG VIEW

Interior design: Jacques Grange. Furniture selection: Sharon Goldreich, sharongoldreich.com. Rentals: Cedric Reversade and Paul-Maxime Koskas, UniquePropertiesandEvents.com.

PAGES 68-69: Cocktail table:

Azucena, bebitalia.com.

Chairs fabric: C&C Milano, cec-milano.com.

PAGES 70-71: Table: Angelo Mangiarotti, studiomangiarotti.com.

Chairs: Poggi, poggidesign.com.

Pendants: Azucena. Cocktail table: FontanaArte, fontanaarte.com.

Chair: Poggi. Pendant: FontanaArte.

Sink fittings: Dornbracht, dornbracht.com.



RARE GEM

Interior design: Bepi Povia, bepipovia.com.

PAGES 72-73: Poufs: Maisons du Monde, maisonsdumonde.com.

PAGES 74-75: Jewelry: Bulgari, bulgari.com.

Chairs and bench cushions: Maisons du Monde.

Planters: Enza Fasano, enzafasano.it.

PAGES 76-77: Sconces: EgoLuce, egoluce.com.

Jewelry: Bulgari, bulgari.com.

PAGES 78-79: Bed linens: Novarreda, novarreda.it.

Poufs: Maisons du Monde.

Bath tub fittings: CEA, ceadesign.it.



Egyptian doors bought at auction in shoemaker Christian Louboutin's Paris apartment, page 102.



RENAISSANCE MAN

Interior design: Carlos Souza.

PAGES 80-81: Cushions: Madeline Weinrib, madelineweinrib.com.

Wallpaper: Jennifer Shorto, jennifershorto.com.

Photographs: Fernando Bengoechea, fernandobengoechea.com.

PAGES 82-83: Lamp: Fortuny, fortuny.com.

Rug: Federica Tondato, federa.com.

Artworks: Viviane Sassen, vivianesassen.com;

Alberto Di Fabio, albertodifabio.com.

PAGES 84-85: Bedspread: Calvin Klein, calvinklein.us.

Suit and shoes: Valentino, valentino.com.

Wallpaper: Jennifer Shorto.

PERFECT TRANSLATION

PAGES 86-93: Interior design: Studio Peregalli, studioperegalli.com.



Chair: Emu, emuamericas.com.

PAGES 96-97: Sofa fabric: Raoul Textiles, raoultextiles.com.

Slipcovers fabric: Designers Guild, designersguild.com.

Paint: Old-Fashioned Milk Paint Company, milkpaint.com.

PAGES 98-99: Table: Serralunga, serralunga.com.

Pendant: FontanaArte, fontanaarte.com.

Bird vases: Artemest, artemest.com.

Stools: Gervasoni, gervasoni1882.it.

PAGES 100-101: Headboard fabric: Dedar, dedar.com.

Pendant: Kartell, kartell.com.

Rug: Trade Secrets, tradesecretshome.com.

Plates: Artemest, artemest.com.

Quilt: Etsy, etsy.com.

SOUTHERN EXPOSURE

Interior design: Bill Brockschmidt, brockschmidtandcoleman.com.

PAGES 94-95: Bowl: Sud, sudneworleans.com.