



THE CALL OF THE OCEAN

August 1, 2021 - Issue 8, Page 104

REACH: 428000 - MIV: €991 - Page occupation: 0.04



United Kingdom
Good Housekeeping GB



PALE AND INTERESTING
As a fan of cooking and entertaining, Emma adores the kitchen. She chose a Neptune Suffolk kitchen with white marble worktops, completing the look with white pendants and chairs. Pale, glossy tiles from Marlborough Tiles bounce light around the room and wooden accents are dotted throughout to add contrast.



▲ WARM WELCOME
A glazed door makes an inviting entrance to the house. The Cornwall map print is from Boid & Noble.



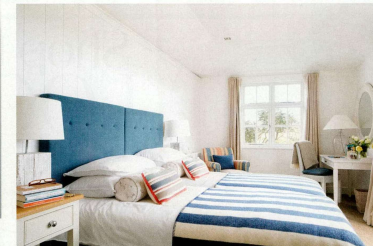
▲ BOX CLEVER
Fitted storage in the hallway keeps boots, hats and bags tidy and out of the way.



▲ ROOM WITH A VIEW
Emma and John turned an upstairs office with stunning sea views into a luxurious bedroom suite. The vista is absolutely gorgeous from almost every window in the house, but especially from the balcony of this room. Table lamps that resemble driftwood are another nod to the seaside location. Emma reupholstered a bed frame in the Constance fabric from Cabbages & Roses. The light and airy shades of white are offset by small doses of pattern in the cushions covered in Maremma Rigato fabric from C&C Milano, and a throw adds texture.



▲ BATHROOM RETREAT
When converting the office into a main bedroom, Emma and John also made space for an en-suite bathroom. The vanity unit is from Neptune, the basin is from Villeroy & Boch, and the taps are from Lefroy Brooks. Similar pebble-effect flooring can be found at Karndean.



GO WITH THE FLOW
All of the guest rooms have matching headboards and throws for a unified look. Here, bolster cushions are made up in the Jack All Star fabric from Peony & Sage. The dressing table, glass lamp base and lampshade are from Neptune. Curtains made bespoke by Sims Hilditch finish the look.