

home truths

DESIGN BRAND YOU LOVE?

C&C Milano — I can't get enough of their fabrics.
The patterns are just incredible.

FAVOURITE WALL COLOUR?

Off-white. Going for a proper white makes a space
look too sterile. You want a cosy feel.

DREAM PIECE OF FURNITURE?

My dining table by Gallotti&Radice, which manages
to be both massive and elegant.

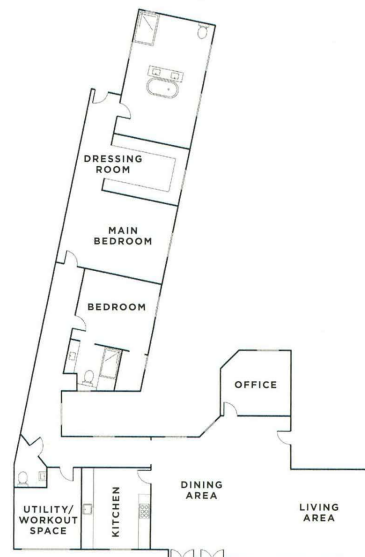
ESSENTIAL DECORATIVE ACCESSORY?

Dried flowers. I have them all over the flat - they are
no work, yet incredibly beautiful.

BIGGEST DESIGN MISTAKE?

There are none... Thank you Theresa!

the blueprint



houses



MAIN BATHROOM

'I always had quite dark bathrooms, so it was important for me to have enough light in here,' says Nina

Vanity unit and swivel mirrors, all custom-made. **Taps**, VADO

CLOSET AREA

As Nina is a fashion influencer, it's no surprise that clothing storage was a key requirement.

Lights, Sogni Di Cristallo.
Curtains, C&C Milano

GUEST BEDROOM

Theresa's layering of subtly patterned and textured fabrics prevents the neutral colour scheme from becoming bland.

Bespoke **bed**, Flow & Show.
Pendant light, Sogni Di Cristallo.
Side table, Andrew Martin