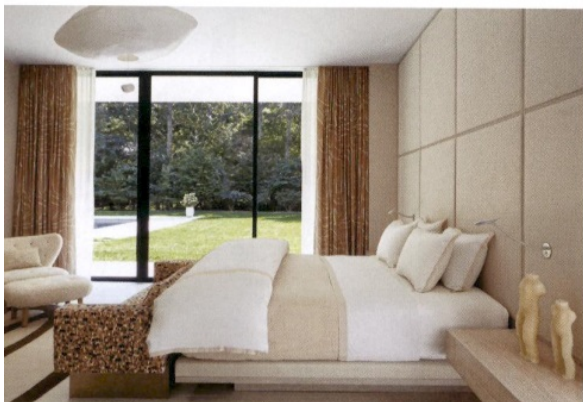


Top: Damien Hirst's Butterfly Kaleidoscope wallpaper and a Samantha Gallacher rug animate the built-in bed and storage in a daughter's room. **Center:** Custom oak cabinetry surrounds much of the kitchen, with Corian countertops, Piet Boon stools, and tractor headlight-inspired Outsider pendants by Jacco Maris. **Bottom:** In the main bedroom, Dune's Stellar chair and ottoman face the custom walnut-based bed and nightstands integrated into a linen-upholstered wall; the drapery fabric is Kelly Wearstler's Grafitta.

Opposite: Beyond Dune's Float bench in the guest bedroom, the console and the gold-tinted stainless-steel wardrobe doors with lacquered rings are custom.



plans developed: A custom-fabricated carport was tacked on and room was carved out below the eaves to create a half level, a cozy attic den that can double as a guest bedroom. "It's the house we wanted," Shemtov says. "But we went way over budget and it took nearly three years to build."

A big chunk of that time was devoted to fitting out the 8,000-square-foot interiors. It's not uncommon for Sawyer|Berson to handle every aspect of a project—architecture, interiors, landscape—as can be seen in the duo's forthcoming monograph, to be published by Rizzoli this fall in advance of the firm's 25th anniversary. But in this case Shemtov oversaw the interiors himself, his first time designing a project of this scale. "Every inch of the house was considered and thought out, almost to the point where it was obsessive," he admits.

Architectural detailing was kept to a minimum—just simple baseboard trim and crisp custom millwork in select spots. In the double-height living area, Shemtov devised a striking fireplace surround in richly grained wenge and, opposite, built-in bookshelves with a hand-glazed faux-linen finish, their back panels lined with mirror or hair-on hide to add layers of texture. On the ground level, 8-inch-wide pine floor planks were treated using a wire-brushed effect and then treated to a milky glaze. "You walk barefoot on it and it feels like a massage," Shemtov enthuses.

All built-ins and seating and most of the tables were made by Dune, which employs some 60 full-time furniture makers at its New Jersey facility. Shemtov used a mix of Dune Collection pieces and original designs—some of which have since been added to the line, like the living area's amoeba-shape ottoman/table, upholstered in harlequin-pattern panels of coral leather, and the dining area's Donald Judd-inspired teal-aluminum sideboard. Downstairs, which offers billiards, ping-pong, Pac-Man, ➔

down,” says Sawyer. “Richard came up with the idea of lining it with pots, which I think is fun and punchy.”

The focal point of the rear grounds is a minimalist swimming pool, surrounded by porcelain-tile coping and a sweep of precisely graded lawn. There’s an outdoor kitchen and a poolside dining pergola, as well as a covered terrace that’s become one of the family’s favorite hangout spots. Shemtov imagines spending weekends and summers here with the girls—and, eventually, their families—for many years to come. “Labor of love is a commonly used term,” he says, “but with this house, it resonates a lot.”



PROJECT TEAM

ALEX TAYLOR WILK: SAWYER/BERSON. **BLUE SKY DESIGN:** STRUCTURAL ENGINEER. **BK KUCK CONSTRUCTION:** GENERAL CONTRACTOR.

PRODUCT SOURCES

FROM FRONT TOULEMONDE BOCHAT: RUG (LOUNGE). **NORMANN COPENHAGEN:** SMALL SIDE TABLE. **ROMO:** CHAIR FABRIC (LOUNGE), DRAPERY SHEERS (LIVING AREA, DINING AREA), BANQUETTE FABRIC (MUDROOM), BENCH FABRIC, WINDOW-TREATMENT FABRIC (GUEST BEDROOM), SETTEE FABRIC (MAIN BEDROOM). **ANNA KARLIN:** PENDANT FIXTURE (DINING AREA). **ÉLITIS:** CHAIR FABRIC. **CROSBY STREET STUDIOS:** RUGS (DINING AREA, GUEST BEDROOM). **SCHMITT DESIGN:** CHANDELIER (LIVING AREA). **POLLACK:** SECTIONAL FABRIC. **KERRY JOYCE:** CHAIR FABRIC. **THROUGH JEFF LINCOLN ART & DESIGN:** COCKTAIL TABLE, SIDE TABLES. **ORTAL:** FIREPLACE. **FORO MARBLE:** FIREPLACE STONE. **STONE SOURCE:** FLOOR TILE (MUDROOM). **RENSON:** CUSTOM CARPORT, CUSTOM PERGOLA (EXTERIOR). **DAMIEN HIRST:** WALLPAPER (BEDROOM). **ART + LOOM:** RUG. **KNOLL TEXTILES:** WALL FABRIC. **ROBERT ALLEN:** HEADBOARD FABRIC. **BRINKLICHT:** PENDANT FIXTURES (KITCHEN). **CORIAN:** COUNTERTOPS. **PIET BOON:** STOOLS. **WOLF:** OVEN. **CALIFORNIA FAUCETS:** SINK FITTINGS. **THROUGH LEE JOFA:** DRAPERY FABRIC (MAIN BEDROOM). **C & C MILANO:** BED FABRIC. **CÉLINE WRIGHT:** PENDANT FIXTURE. **BEADLIGHT:** SCONCES. **JAB:** CHAIR FABRIC, OTTOMAN FABRIC (MAIN BEDROOM), CHAIR FABRIC (GAME AREA). **MGS MILANO:** OUTDOOR SHOWER (GUEST BEDROOM). **PELICAN POOLS:** POOL (TERRACE). **CERAMICHE REFIN:** PAVERS. **LINDSAY COWLES:** WALLPAPER (BEDROOM). **PAUL SMITH:** LAMP. **LORO PIANA:** CHAIR FABRIC. **VERZELLONI:** BENCH. **JANE CHURCHILL:** BENCH FABRIC. **MODERNICA:** SCREENS (GAME AREA). **MOODI:** PENDANT FIXTURE. **SALVATORI:** WALL TILE (BATHROOM). **CONCRETE COLLABORATIVE:** COUNTERTOP STONE. **ANN SACKS:** FLOOR TILE. **BRIZO:** SINK FITTINGS. **BTRADITION:** LAMP (DEN). **THROUGHOUT FLEETWOOD WINDOWS & DOORS:** WINDOWS, EXTERIOR DOORS. **RHEINZINK:** ROOF. **HARBOUR OUTDOOR:** OUTDOOR FURNITURE. **STONHARD:** RESIN FLOOR COATING. **BENJAMIN MOORE & CO.:** PAINT.



STYLIST: S.Wallis

CATEGORY: Upholstery material/passanterie